



02 President's Update  
03 Pool Update

04 Events Calendar  
Tasty recipe

07 Summit Road  
Closure

08 New Businesses

10 Garden and  
Landscape

11 Celebration News

# The Pleasant Run Farms Memo

October  
**2019**

[www.pleasantrunfarms.org](http://www.pleasantrunfarms.org) A publication brought to you by the PRF Civic Association

## PRF Sports report:

Our fall sports season kicked off in September with kids playing soccer. There are nearly 50 kids signed up to play soccer this fall at Pleasant Run Farms. These 50 players are split among 6 teams. Each team has their own bright colored uniform shirt. Volunteer coaches are teaching the kids the basics of soccer. With so many kids and adults of all ages now playing soccer, this is a great introductory program we have here at PRF. All the kids get plenty of playing time.

Games are played on Friday evenings at our Clifford George fields. All of these kids are 4 – 6 years old and are playing Lollipop soccer with us. It's enjoyable to see parents and grandparents watching their kids have so much fun kicking the ball. With the games at Clifford George fields, they are close and everyone can easily drive to see them play.

This season will conclude this month. Then the PRF Athletic Association will begin plans for the spring sports season. Signups for boys and girls wanting to play baseball, softball and Tball will start in a few weeks. Watch the Memo and messages from our Baseball Commissioner about registrations.



# Hi Neighbor!

## President's Update



At the Civic Association General Meeting on September 4th, TJ Ackermann, the Welch property developer laid out the developments timeline and answered residents' questions on what is planned for the new homes and how the construction will be handled. Kathleen Kennedy was there from the Springfield Township and answered planning questions. The hearing process should be completed this fall and after the first of the year the initial stages of the project should begin. All residents within 200 ft. of the development will be notified of the hearings.

Todd Bowling, NWLSD Superintendent discussed the upcoming School Levy at the General Meeting. For the most part, the Levy is necessary because of the reduced State funding to schools. If the Farms is going to maintain our vibrant community it will be very important to support our schools. If our schools are poorly funded we'll have fewer folks looking for homes in the Farms and home prices will suffer.

Don't forget to take advantage of the 2020 Swim Club Early Bird Special for a family membership for only \$198 if you join before November 1st. Next year, in order to meet all our Swim Club expenses, the family membership will be \$250. You'll be happy to know that we're working on some exciting plans for next year's season.

Roads, roads, roads! In the next 60 days, Springfield Township will resurface a strip on each side of Elkwood from John Grey to Deerhorn. We'll all be looking forward to that repair.

Recently, there have been a number of postings on Nextdoor about cars running stop signs, driving fast and not stopping for school buses in the Farms. The Springfield Township Police Department is aware of the concern and is beefing up patrols in the Farms. They are also in contact with NWLSD Transportation Dept. to get plate numbers for any cars not stopping for school buses.

Be sure to mark your calendar for this years Holiday in the Farms on December 7th. It will be a fun day with Santa, the Luminair , Limo rides and lots of activities for children at the Trolley Depot.

Have a great October.

Skip Wicklund

PRFCA President

# Swim Club

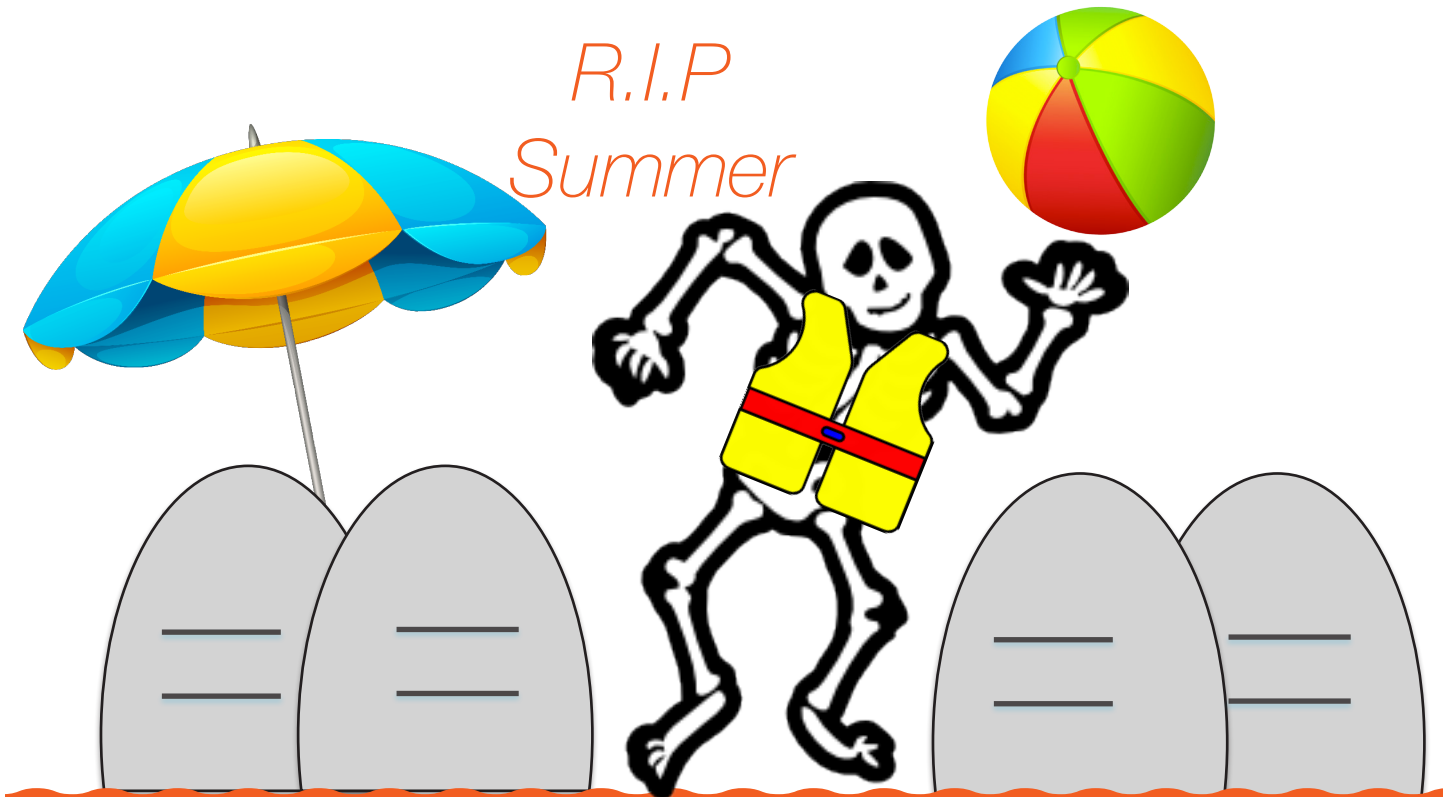


The Pleasant Run Farms Swim Club is now under New Management. Welcome Mary Barrera. Thank you to Natalie Winkler and Cindy Goldick for running it this year. Mary can definitely use your help. Send an email to prfswimclub@yahoo.com if interested.

We will be in need of several lifeguards next year so now is the time to look into getting the training.

New Management has promised to purchase some new pool furniture, clearing the old pool paint and repainting the pools and setting clear expectations for the lifeguards and concession workers.

We are offering an early bird special. Join by November 1, 2019 at 2019 rates of \$198 for a family membership, \$174 for a couple and \$150 for a single membership. Join at prfarms.org under swim club page. 10 month payment plans are available. Rates will raise to \$250 for a family membership after November 1 so join now.





You are invited to  
 Trunk or Treat  
 a safe Halloween alternative for Families  
 Sunday, October 27  
 6:00 pm to 8:00 pm  
 Augsburg Lutheran Church  
 11676 Hamilton Ave, Cincinnati, 45231  
 (Next door to Speedway)  
 Box maze, activities, refreshments  
 Children may wear costumes  
 513.825.2240  
 All are Welcome!



**18** HallowEve Brew Bash

**20** Fall Food Fest  
 Art on Vine

**Today's Recipe**  
**Mummy Pizza**

- 2-4 English muffins
- 1 can marinara sauce
- 1 bag mozzarella (cut into thin strips)
- 1 jar sliced black olives
- 1-2 green peppers (cut into small pieces)

- 01** Spread split English muffins with marinara (toast first if desired).
- 02** Arrange strips of mozzarella across the sauce in a crisscross pattern like mummy bandages.
- 03** Nestle in two olive slices for eyes. Add green pepper pieces for pupils
- 04** Bake in a 400 degree F oven until cheese is melted and golden in one or two spots.

Membership Applications are available in this memo and on the website listed below or by calling our Membership Chairperson, Monica Bowles.

Dues are \$25 a calendar year. (\$35 for monthly hard copy memo distribution)

Check out the website below for additional news and community information.

- Hard Copy Issue Advertising Rates
- Back Full Page \$110
  - Regular Full Page \$ 90
  - Half Page \$65
  - Quarter Page \$25
  - Business Card Size Ad \$25
  - Classified Ad \$8

Eletronic Issue Rates are 1/2 the cost of Hard Copy Issue Rates

Contact Jalisa Harris @ [harrisjalisa88@gmail.com](mailto:harrisjalisa88@gmail.com) to place your Classified or Business Ad.



**25** TasteMakers 2019

**26** HallZOOween

**31** TRICK OR TREAT  
 6PM - 8PM



**YOUR PRF EXECUTIVE BOARD MEMBERS:**

Skip Wicklund skipwicklund@gmail.com (President)

Jerome Bouie (VP)

Ed Mayer prfcatreasurer@yahoo.com (Treasurer)

Bert Cameron (Secretary)

John Buschmann johnbusch25@yahoo.com (Athletics)

Jalisa Harris harrisjalisa88@gmail.com (Communications)

Mary Barrera mbarrera@comey.com (Community Activities)

Monica Bowles (Membership)

prfswimclub@yahoo.com (Swim Club)

SPRINGFIELD TOWNSHIP

# WinterFest

REIMAGINED

DECEMBER 7<sup>th</sup> & 8<sup>th</sup>

BREAKFAST WITH SANTA • WINTER VILLAGE • ARTS FAIR  
FAMILY ENTERTAINMENT • FIREWORKS

DECEMBER 7<sup>th</sup> | BREAKFAST W/ SANTA 10AM  
DECEMBER 7<sup>th</sup> | 12 - 7PM  
DECEMBER 8<sup>th</sup> | 1 - 5PM  
Springfield Twp. Civic Center | 9150 Winton Road  
FREE ADMISSION WITH DONATION OF COAT, NEW TOY OR CANNED GOOD

LEARN MORE:  
TheArtsConnect.us/WinterFest  
CALL: (513) 522-2108

ARTSCONNECT™  
SPRINGFIELD TOWNSHIP

PREMIERE SPONSORSHIPS BY:

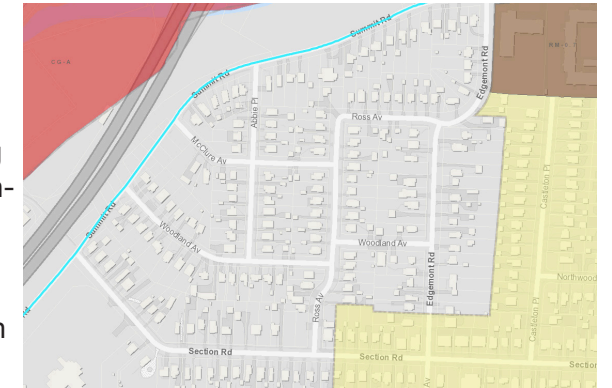
## SUMMIT ROAD CLOSURE (Between Edgemont Road and Abbie Place)

Article by Springfield Township

Theodore B. Hubbard, the Hamilton County Engineer, would like to announce the closing of Summit Road located between Edgemont Road and Abbie Place in Springfield Township.

W.E. Smith Construction will be repairing the landslide beginning **Monday, October 28, 2019** thru Friday, January 10, 2020 (weather permitting). W.E. Smith Construction's detour will be routed from Section Road to Edgemont Road and vice versa.

Any problems/questions should be directed to either Gene Smith with W.E. Smith at (513) 508-2157 or to Logan Kunkel with the Hamilton County Engineer at (513) 946-8430. Please do not reply to this email.



For information on other projects, please visit our web site at: [www.hamilton-co.org/engineer](http://www.hamilton-co.org/engineer).

Respectfully,

Theodore B. Hubbard, P.E.-P.S.

Hamilton County Engineer

## Lexington Heights Park Under Construction

Article by Springfield Township



Lexington Heights Park, located in Springfield Township at 1406 Meredith Drive is currently under construction. The park is undergoing improvements to make it more accessible. Sidewalks and a small parking lot is being added, as outlined in the 2016 Comprehensive Neighborhood Master Plan. Construction is expected to be complete near the beginning of November. Park use is very limited during construction. The picnic shelters will not be accessible until the project is complete.

## Welcoming New Business to Springfield Township

Small businesses are just as unique and individual as their owners, and cover a variety of industries. They fuel the American dream and allow people to pursue their passion. Small businesses also allow people the opportunity to achieve financial independence, create employment opportunities and encourage innovation.

Springfield Township welcomes a few new small businesses to the community.

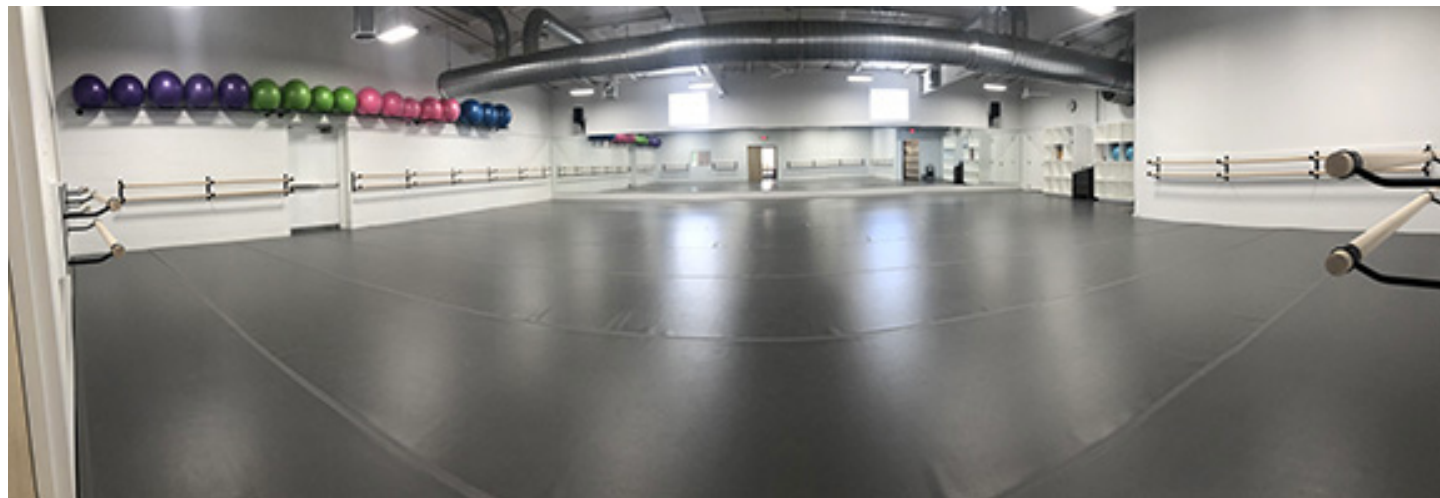
### Beyond the Barre, LLC 790 Compton Road

What was once a vacant 6,000 sq ft warehouse, is now home to Beyond the Barre. This new business is made of three beautiful studios, perfect for dance and fitness. Owner and Artistic Director, Dena Morley said "Springfield Township offered the perfect location for our growing ballet program. Many of our students live nearby and we are excited to be a part of such a friendly, welcoming community."

Extensive renovations were made to the warehouse, located behind the new Papa John's and Humbert's building. The addition of marley flooring in each studio, new restrooms, landscaping and a new HVAC are just some of the changes made. According to Dena, the entire building was rehabilitated.

Beyond the Barre opened September 17th and is now offering more than 50 children and adult classes per week. The new facility opens Beyond the Barre up to a variety of offerings, including ballet, yoga, lyrical/modern dance, Pilates, tap for children and adults, & ballroom dance for adults. Deanna has 15 instructors and will be introducing BtB Fit, a blend of strength/toning/stretching for adults.

*\*Parking for Beyond the Barre is located behind Humbert's and Papa John's. A complete list of classes with times are available on their website.*



### B&D Asian Nepali Market 9172 Winton Road

B&D Asian Market prides itself as being a one-stop shop for Indian grocery needs. From fresh produce, to traditional garments and kitchen utensils, B&D Asian Nepali Market has items used by Bhutanese, Nepali & Indian communities, under one roof. Store manager, Sanjay Thakur explains, "There is no need for long hours of drive for daily shopping."

B&D Asian Market opened its Winton Road location in the former Bruegger's Bagels site in early September. This is their second store. The first B&D is located at 3091 West Galbraith Road. "We have plans to open the kitchen within the next month," shared Thakur. Shoppers can look forward to Indian and Nepalese meals including (Chicken and Mutton) Biryani, (Chicken, Mutton and Fish) Curry Rice, (Vegetable, Chicken and Pork) Chow Mein and (Chicken and Vegetable) Dumplings. Their hours are 9:30 AM - 8 PM.

### OPENING THIS WINTER! Mi Cozumel 8565 Winton Road

Construction of Mi Cozumel is well underway. Extensive work on the interior of the former Applebee's will take some time, however owners anticipate opening in December. (This, of course, is tentative barring no construction delays.) Mi Cozumel is famous for its margaritas and flaming fajitas. It's first location in Tri-County Mall is open for business, so go try them out!



## Garden and Landscape Fall Maintenance

Article by Roger Schafer

The month of October generally brings on the cooler, dryer climate which allows mums to flourish. These plants produce a variety of color blooms continuing through early to mid autumn. If moderately watered and sheltered, they can survive the first week of frost. It usually takes a couple of hard nightly frosts to burn the blooms. However, mums are hardy plants which survive the winter months if properly cut back and securely rooted. I prefer the larger rainbow mum planter displays consisting of two or three color varieties. They seem to bring life back to the flower beds as summer extreme weather has taken its toll.

As cool weather approaches and frost is in the forecast, I begin the process of landscape clean-up. Clearing flower beds and pruning perennials in the fall is a matter of personal preference. I prefer the winter landscape view of leveled beds and pruned bushes and trees. In addition, this allows a fresh start for Spring flower bed preparation and mulching.

Now that watering and plant maintenance has reduced to fifty percent, this gives me a chance to discard old non-productive baskets and annuals. The more I can clear within a weekly walkthrough, the less work involved when the 'killer frost' arrives.

Subsequently, everything seems to go at once. I take one bed at a time; emptying baskets, pulling annuals, and cutting down (to ground level) Grasses, Hostas, Tigerlilies, Daylilies, and Lily of the Valley. Care must be taken when 'pulling' or 'cutting' the bed arrangements. Some plants like Daylilies, Easter Lilies, and Asiatic Lilies, originate from bulbs. Pulling the bulb vs. cutting the plant to ground level requires re-planting the bulb. These plants/bulbs tend to double and triple every season. Over time the plants will cluster and show more foliage and less blooms. It is advisable to extract and divide the bulbs for re-planting in the Spring.

Once the beds are completely cleared, I like to loosen or overturn the old mulch to allow aeration and moisture to penetrate the bed. A lightly applied dry fertilizer mixed within the mulch seems to encourage Spring growth. New triple shredded mulch is applied every Spring, however it is advisable to clear old mulch after several seasons of layering. Some gardeners clear the old mulch every Spring before applying the new layer. This will prevent mold build-up, harmful to plant health. I generally trim one last sharp edge around the beds in mid-November, when the lawn finally begins the dormant stage. A final note on cleared flower beds. Our Bradford Pear and Flowering Crab trees drop leaves until mid-December. Raking leaves from clean, leveled beds is much easier than working around dead plants and rooted debris.

Our Fall lawn care preference includes: September aeration and overseeding, October fertilizing (fast release nitrogen and iron mix), November winterizing (slow release nitrogen). Over the years, this lawn care program has been successful for jump starting early Spring growth, thickness, and color. In addition, the Fall applications seem to control the Spring emergence of grey snow mold and red thread fungus.

Our Fall clean-up process finishes approximately mid-December. The renewed Spring preparation begins in late March (including lawn mowing). With some wishful thinking, very little if any snow removal in-between.

Roger Schafer  
12076 Havilland CT.

## Celebration News: Birthdays and Home Anniversaries Oct 2019

Sunday	Monday	Tuesday	Wednesday	Thursday	Friday	Saturday	Resident Anniversaries
29	30	1 Jo Anne Obermeyer	2 Sarah Mayer	3	4	5	Skip & Susan Wicklund 1972
6	7 Nicole Brearton	8	9	10	11	12	Edward G. & Mary R. Wurzbacher 1974 Joan Reul 1978
13	14 Barbara Rodgers Bryan Doloresco	15	16	17 Brenda Cameron	18	19	Bruce Patterson 1980 Albert & Nancy Eichorn 2002
20 Tess Campbell	21	22	23	24	25	26	Vivians Family 2003 Sutton Family 2011
27	28	29	30	31 Karen Schafer	1	2	

### Across

2. She rides a broom.
3. This monster is a dead person's body.
6. This monster breathes fire and looks like a large snake or lizard.
7. A one-eyed giant.
9. This monster was made in a laboratory by a scientist.
11. This monster is made of bones.
13. A monster from outer space.

### Down

1. This monster is the spirit of a dead person
2. A monster that comes out when the moon is full.
4. A monster from the pyramids of Egypt.
5. A monster that drinks blood.
8. A huge person.
10. This monster hides under bridges and waits to eat people.
12. This monster looks like a large ugly person and usually lives in a cave.

