



*The Pleasant Run Farms MEMO*  
*“An Active Community”*  
*February 2014*  
*Volume 46 Issue 2e*  
*www.pleasantrunfarms.org*  
*A publication brought to*  
*you by the PRF Civic Association*

### **Pleasant Run Farms Civic Association Scholarship**

The Pleasant Run Farms Civic Association will once again offer a \$500 scholarship to a graduating high school senior. Applicants must be receiving a high school diploma and intend to continue his or her education at a college or technical school. The applicant’s family must be residents of Pleasant Run Farms and a current member of the Civic Association to be eligible. Scholarship applications will be available online at [www.pleasantrunfarms.org](http://www.pleasantrunfarms.org) in this month, or you may contact our secretary, Christina Norris, to obtain a hard copy of the form. All applications must be returned to Christina Norris by March 31, 2014. The winner of the scholarship will be announced at the Civic Association's General Meeting in April.



If you are interested in serving on the scholarship committee to help judge the applications, please contact Christina Norris. Contact information is on page 2 of this memo.

Christina Norris, PRFCA Secretary/Scholarship Chair

### **PRF Baseball, Softball & T-ball**

I am happy to announce that PRF Baseball, Softball, and T-ball registration is now available online. Simply click the “PRF Athletic Association” link below. When you see “Sign Up Now”, click “Read More”.

Registration is open now through March 1st. Please note that if you register online, you DO NOT have to pay online. Payment can be made with a credit card during the registration process or you can mail payment to: PRF Baseball, 11955 Elkwood Drive Box A, Cincinnati, OH 45240. Make checks payable to PRFAA.

For those who would prefer to do things the old-fashioned way, we have you covered as well. Click the link for the “PRF Civic Association” below, scroll to the bottom left, and download registration forms for later. Mail the forms with payment, to the address above.

PRF would love to add some new faces to our coaching ranks this year. If you have experience in coaching, or an interest in getting started, we’d be happy to have you. We are looking for volunteers to help in non-coaching roles. Anyone interested in helping out, and making an impact in our community, should contact PRF Baseball Commissioner Matt Heller at [Hellermj@fuse.net](mailto:Hellermj@fuse.net) or (513) 295-1808.

Please contact me with any question. Thanks.

[Pleasant Run Farms Athletic Association](#)—click here to sign up now

[Pleasant Run Farms Civic Association](#)—click here to download forms for future registration

Matt Heller, PRF Baseball Commissioner, (513) 295-1808

N  
E  
W  
S

Y  
O  
U

C  
A  
N

U  
S  
E





The MEMO is published by the Pleasant Run Farms  
Civic Association,  
11955 Elkwood Dr.,  
Cincinnati, Ohio 45240  
[www.pleasantrunfarms.org](http://www.pleasantrunfarms.org)



**Hard Copy Issue Advertising Rates:**

Back Full Page \$110 Regular Full Page \$90

Half Page \$65 Quarter Page \$45

Business Card Size Ad \$25

Classified Ad \$8

Electronic Issue Rates are 1/2 the cost of  
Hard Copy Issue Rates

Contact Venita Vivians at

[vvivians@prodigy.net](mailto:vvivians@prodigy.net) to place your Classi-  
fied or Business Ad.

## Pleasant Run Dry Cleaners

Same Day Service-

In by 10:00 Out by 4:00

Shirt Laundry

FREE Minor Repairs

Ask for our 20% off Dry Cleaning  
Card

**6106 Winton Road at Mack Road**

(between Jay's Food Mart & Domino's Pizza)

**Fairfield, OH**

**829-4441**

**YOUR PRF EXECUTIVE BOARD MEMBERS:**

Kevin Puccini [kevinpuccini@yahoo.com](mailto:kevinpuccini@yahoo.com) (President)

OPEN (VP)

Ed McNett 377-4463 [emcnett@opwftg.com](mailto:emcnett@opwftg.com) (Treasurer)

Christina Norris 851-3013 [cdnorris2004@yahoo.com](mailto:cdnorris2004@yahoo.com)  
(Secretary)

Linda Boylson 674-1760 [laboylson@yahoo.com](mailto:laboylson@yahoo.com)  
(Membership)

OPEN (Community Activities)

Erin Knox 266-1000 [prfswimclub@yahoo.com](mailto:prfswimclub@yahoo.com) (Swim Club)

OPEN (Athletics)

Venita Vivians [vvivians@prodigy.net](mailto:vvivians@prodigy.net) (Communications)

**Memo Deadline for  
Advertisements and Articles  
Friday, February 21, 2014**

The **March Electronic Copy Memo Delivery** will occur the weekend of March 1st. The memo will be available on the website, [www.pleasantrunfarms.org](http://www.pleasantrunfarms.org), by February 28, 2014. If you would like to **place an ad in** or **contribute an article to** the Memo, please contact Venita Vivians, Memo Editor at [vvivians@prodigy.net](mailto:vvivians@prodigy.net) (include Memo in the subject). If you have any problems with **receiving** your Memo, please contact Susan Scheib at 931-3508.

The Memo and the PRF Civic Association reserve the right to refuse any content. Letters to the editor will be published only with the authors name. Any comments, suggestions, or new contributors are welcome.

PRFCA Membership Applications are available in this memo and on the website listed below or by calling our Membership Chairperson listed above.

Dues are \$25 a calendar year.

Check out the website below for additional news and community information.

[www.pleasantrunfarms.org](http://www.pleasantrunfarms.org)

# PRFCA GENERAL MEETING MINUTES

Pleasant Run Farms Civic Association  
General Meeting  
January 23, 2014

A General Meeting of the Pleasant Run Farms Civic Association was held Thursday, January 23, 2014 at 7:30pm at Welch Elementary. The following are the minutes from the meeting:

The meeting was called to order at 7:32pm. Seven members of the community were present.

President: Kevin Puccini – Nominations for PRFCA board positions were held: Erin Knox was nominated for Pool Director, and Linda Boylson was nominated for Membership Director (changing from Community Activities Director). All other positions remaining the same. Vote was held, with a unanimous vote for all positions.

Vice President: POSITION REMAINS OPEN AT THIS TIME. If interested in this position or questions, please contact Kevin Puccini.

Treasurer: Ed McNett reported membership at this point in 2014 has improved over the previous year, therefore budget is off to a good start. Reviewed end-of-year budget 2013 and financial report for January 2014 budget to be discussed in more detail at next month's meeting. Treasurer's report was voted on and accepted by the board.

Secretary: Christina Norris reported the PRFCA scholarship applications will be available online beginning Feb. 1<sup>st</sup>, with a submission deadline at end of March. Winner to be announced at the April General Meeting.

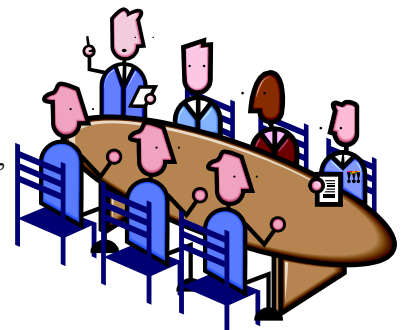
Athletic Director: John Buschmann sat in tonight to give report, as Athletic Director's position is currently open. Signups for spring sports are now underway. A mailing has gone out regarding registrations. Already ordered and received a great deal of new equipment for this year. Can refer to PRF website for additional information on spring sports and registration.

Communications: Venita Vivians advised January's memo was a hard copy memo; February's will be an electronic distribution. Ads and articles will be due by this Saturday. Memo to be emailed weekend of February 1<sup>st</sup>. Discussed articles needed for February memo.

Membership Report: Linda Boylson, new to the role, reported she would like to revive the street rep program. She is also working on getting new 2014 discount cards for members and reconfirming the discounts provided by local businesses.

Community Activities: Position open at this time due to Linda Boylson becoming new Membership Director; however, as outgoing Community Activities Director she reported she called to check on the possibility of using horses in this year's 4<sup>th</sup> of July parade; Winton Woods is no longer able to offer this service. The group who assisted with parades disbanded, and their students are not permitted to take part in parades. Linda also noted that if anyone is interested in becoming Community Activities Director, she will be available to assist them in their new role as they get acclimated.

Pool: Erin Knox, new Pool Director, introduced the new pool board – she will be working with Susan Scheib and Beth Akemon, who will each handle different aspects of running the pool each summer. Ed Mayer will also be assisting as Pool Treasurer. They are planning for new activities to take place at the pool this summer, but no major changes in daily operations. Tonya Klei, longtime pool director, will continue to work closely with the new board in this first year. Payment plan for pool memberships will again be offered this year. The payment plan can be accessed online. Incentives will again be offered for those joining early. See PRF website and upcoming memo for details.



(continued on next page)

## PRFCA GENERAL MEETING MINUTES (CONTINUED)

(continued from previous page)

Old Business: None

New Business: None

Announcements: None

Being no further business to come before the Board, the meeting was adjourned at 8:05pm.

Next meeting: Thursday, February 20<sup>th</sup>, 2014 at 7:00pm.

Christina Norris, PRFCA Secretary

## PRF SWIM CLUB

Are you ready for warmer weather? Join the PRF Swim Club today and begin dreaming of relaxing, sunny days at the pool!

The PRF Swim Club boasts some of the cleanest facilities and lowest prices in the area. Go to [www.pleasantrunfarms.org](http://www.pleasantrunfarms.org) and visit the Swim Club link to join. If you are paid in full by March 31st, you will receive 5 guest passes. You can pay in 5 monthly installments (we will send you a reminder email when your next payment is due).

If you have any questions about the pool, please email us at: [prfswimclub@yahoo.com](mailto:prfswimclub@yahoo.com) or Erin Knox (Pool Director) at 266-1000.



Erin Knox, Pool Director

## JOINT ECONOMIC ISSUE ON THE BALLOT—MAY 2014

Township Trustees Place Joint Economic Issue on the Ballot for Voters to Decide  
Voting May 6, 2014 Primary Election

### Background

Springfield Township is a diverse community with many distinctive neighborhoods. Because of its location and amenities, Springfield Township is a predominantly residential community. Approximately 60% of the Township's land use is residential, 30% is used for purposes which are exempt from paying any property taxes (schools, churches, Hamilton County Park District) and 10% is business. Springfield Township, like all townships in Ohio, has historically received the revenue it requires to provide services to its residents from property taxes enacted by Township residents, estate taxes paid by Township residents, and revenues it receives from the State.

### Financial Challenges

In 2011, the State Legislature dealt the Township a devastating blow by enacting sweeping changes to Ohio law which eliminated a majority of the Township's state funding sources. These legislative changes completely decimated all of the Township's financial planning and its 5-year budget projections. With these changes and over only a 2-year period of time, the State Legislature eliminated the estate tax, the tangible personal property tax, the public utility tax, and reduced the Township's share of Local Government Fund revenue by over 60%. Since 2013, these reductions amount to a loss of nearly 2.5 million dollars in Springfield Township each year. More than \$2 million of the reduction in revenues is in the Township's General Fund and depletes that fund by more than half of its total annual revenue.

### Budget Cuts Made

Through tailoring services and programs to those deemed critical to the residents, eliminating staff by consolidating job tasks and positions, reducing employee benefits, instituting "user pays" fees for parks and recreation, modifying senior center rental fees, and creating innovative operational, programming, and internal consolidation efforts, the Township reduced General Fund expenditures by 35%. Even with these changes, there is not enough funding to sustain current operations without additional revenue.

(continued on page 7)



# Journey to Wholeness

## *Restored in Christ*

‘Consider it all joy, when you encounter various trials, for you know that the testing of your faith produces perseverance...so that you may be perfect and complete.’

– *James 1:2-4*

### **A Lenten Study that is a joint effort of:**

+ Augsburg Lutheran Church + St. John Neumann Catholic Church +  
+ Pleasant Run Presbyterian Church + John Wesley United Methodist Church +

## **Christians on the Journey Together**

**Mark your calendars for the Tuesdays of Lent**

**Each topic is offered twice, once at 10:30 am and then again at 7:00 pm.**

March 11 Broken Hearts at Augsburg Lutheran

We journey into the season of Lent with Broken Hearts as a result of sin. This study will look at Joel 2:12-14 and also at Jesus' teachings concerning forgiveness and God's grace.

March 18 Broken Trust & Broken Promises at St. John Neumann

In Matthew 26:14-25 Judas breaks his trust with Jesus by betraying him; our broken trust is restored through the sacrifice of Jesus on the cross. Peter's broken promises to never deny Jesus are restored by the surpassing love of Christ (Matthew 26:69-75).

March 25 Broken Justice at Pleasant Run Presbyterian

A broken system of justice crucified Jesus; yet this was God's plan. In Jesus Christ a way was made for the grace of God to deliver us from the wrath of God and (at the same time) fulfill the justice of God. Saved by this grace, we are called to work together to seek justice and enact kindness in a broken world.

April 1 Broken Curtain at John Wesley

The fourth week of our study will look at the curtain in the Holy of Holies, that century's old divider between God and humankind. At Christ's death on the cross the curtain is torn (Matthew 27:51), the barrier between humanity and God is broken. Join us as we discover more about this curtain and how this brokenness is good

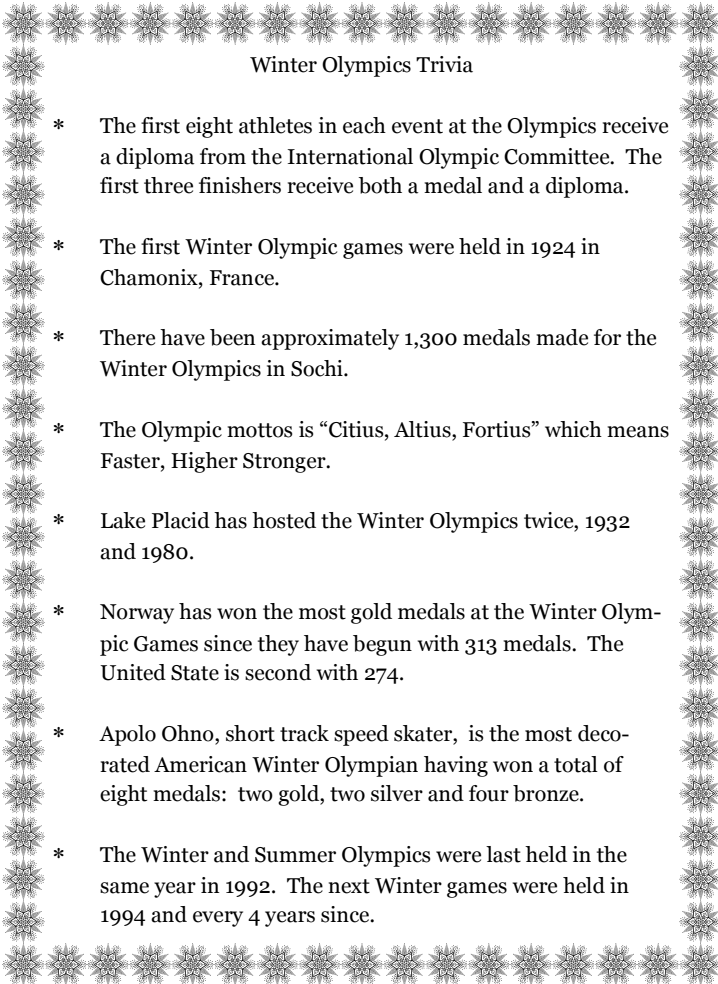
April 8 Broken Bread at Augsburg Lutheran

Bread is broken at the Last Supper. In John 6:48-58, we learn how we are restored through the Bread of Life, Jesus



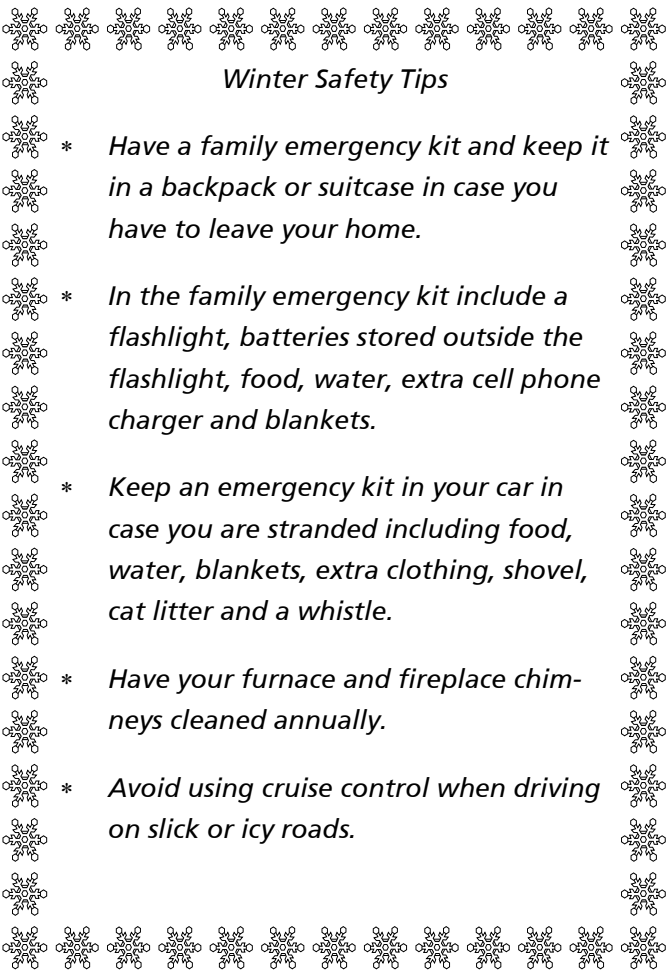
*Join us on this Lenten journey and bring a friend!*

*For more information call Augsburg Lutheran at 825-2240*



### Winter Olympics Trivia

- \* The first eight athletes in each event at the Olympics receive a diploma from the International Olympic Committee. The first three finishers receive both a medal and a diploma.
- \* The first Winter Olympic games were held in 1924 in Chamonix, France.
- \* There have been approximately 1,300 medals made for the Winter Olympics in Sochi.
- \* The Olympic motto is "Citius, Altius, Fortius" which means Faster, Higher Stronger.
- \* Lake Placid has hosted the Winter Olympics twice, 1932 and 1980.
- \* Norway has won the most gold medals at the Winter Olympic Games since they have begun with 313 medals. The United State is second with 274.
- \* Apolo Ohno, short track speed skater, is the most decorated American Winter Olympian having won a total of eight medals: two gold, two silver and four bronze.
- \* The Winter and Summer Olympics were last held in the same year in 1992. The next Winter games were held in 1994 and every 4 years since.



### Winter Safety Tips

- \* *Have a family emergency kit and keep it in a backpack or suitcase in case you have to leave your home.*
- \* *In the family emergency kit include a flashlight, batteries stored outside the flashlight, food, water, extra cell phone charger and blankets.*
- \* *Keep an emergency kit in your car in case you are stranded including food, water, blankets, extra clothing, shovel, cat litter and a whistle.*
- \* *Have your furnace and fireplace chimneys cleaned annually.*
- \* *Avoid using cruise control when driving on slick or icy roads.*



### Kids Looking for Work!!!

Following is a list of young residents looking for work. The PRFCA/Memo does not endorse any of those listed; we list these names free of charge as a service to our community....

#### Babysitting:

- Else Boylson, age 14, 259-9143, basic C.P.R., very good with kids including babies, schedule is EXTREMELY flexible
- Sarah Dean, age 14, 674-9455, Red Cross babysitting course, CPR & First Aid trained/certified (spring 2011), babysitting and/or mother's helper
- Maddie Girts, age 16, 648-9766, CPR certified, has own transportation for babysitting jobs
- JaShaylia Jenkins, age 17, 723-1624, Certified babysitter (2011), CPR (2012). Also has dog care experience
- Claudia Weitz, age 13, 825-3448, American Red Cross babysitting course

#### Yard Work/Pet Care/Odd Jobs:

- Sarah Dean, age 14, 674-9455, pet care
- Louis Girts, age 14, 648-9766, yard work, car washing & other odd jobs
- Jay Sebastian, age 12, 502-0002, mow lawns, shovel snow, rake leaves, general cleaning

#### Tutoring:

- Deja Martin—age 15, dmartfam@gmail.com, Northwest honor student

**Kids and parents please advise if this information needs updating.**



## JOINT ECONOMIC ISSUE ON THE BALLOT—MAY 2014

(continued from page 4)

Springfield Township has engaged its residents and businesses for over a decade in determining the course of the Township and the services it provides. The Township knows what the residents expect in terms of service. However, the Township also knows that its property tax revenues and the dramatically reduced state revenues it receives will not enable it to provide those services for more than a few more years. For this reason, the Board of Trustees and the administrative and departmental leadership of the Township spent the majority of 2013 focusing on how to bridge this gap. All in all, it came down to increase revenue or drastically reduced services. Given the amount of the financial gap and the reductions in service that have already taken place, the Board of Trustees had no real choice—it had to raise revenue and do so relatively quickly.

### Choices

Only 2 methods are available to townships to increase revenue: (1) increasing property taxes on the 70% of Township property owners (residents) who are already shouldering the burden of paying for Township services; or (2) creating a Joint Economic Development Zone (JEDZ) in which a tax could be imposed on the payroll and net business profits of businesses located within the zone. The Board of Trustees chose to pursue the creation of a JEDZ because by doing so, the tax burden on Township residents could be reduced, while some of the businesses and employees who pay no property taxes to the Township in return for the services they receive would be required to pay the tax. The Trustees also decided to create a Community Improvement Corporation (CIC) to provide financial grants to Township residents who work in the JEDZ area (and would be subject to the JEDZ tax) to encourage them to continue to live in the Township.

### Details of The JEDZ

The Township worked with the City of Mt. Healthy to create the JEDZ and agreed that if the JEDZ was created, a tax rate of 1 1/2 percent could be posed. The decision on whether the JEDZ is actually created and the payroll tax imposed on businesses and employees within the JEDZ area will ultimately be made by the residents of Springfield Township, who will vote to approve or reject the JEDZ on May 6, 2014. If the JEDZ is approved, the revenue generated from the JEDZ payroll tax will not fill the entire financial gap created by the State Legislature's sweeping cuts in the Township's state revenues. But it will allow the Township to continue its current level of services to its residents while it implements its current long-range revenue-producing plans and develops others. For instance, in the next 5 to 10 years, the Township will continue to pursue providing services to adjoining communities through shared service agreements, pursue legislative changes needed to internally consolidate at least some of the Township's fire/police services, pursue legislative changes to the manner in which Township levies are structured so that residents can vote to establish a combined Township services levy' and pursue the completion of critical aspects of the Township's Comprehensive Neighborhood Master Plan and continued economic development efforts. Only through a combined, and ever-evolving strategy and planning can the Township achieve long term financial stability while continuing to provide its residents with the excellent public services they expect.

Residents who do not work in Springfield Township will NOT be affected by the 1.5% earning tax. Residents working in Springfield Township will be able to apply and receive a grant through the CIC in the amount that was paid into the JEDZ. Those working in Springfield Township who live in another community, will be affected by the tax. Depending on where they live, they may or may not see a change in their pay.

### Impact of Failure:

If the JEDZ and other major initiatives identified above are not passed/implemented. Township residents and businesses will see a dramatic difference in the Township where they live and work and which they helped to create. The financial gap is simply too large for it to be otherwise. The Township has already cut 1.7 million dollar in expenditures. A further 2.5 million dollar cut each year simply cannot be achieved without very real and very drastic reductions in personnel and services. There will be no other entity to "pick up the slack." The Township will be unable to meet many of the statutorily-required duties that impact all departments and services to the community, including debt obligations. Long term, property values and the quality of life in the Township will be diminished. School districts will be negatively impacted. Neighborhood parks will be closed. Greater demands will be placed on the county and state governments to provide services which they do not currently provide, with fewer and fewer tax revenues coming in to pay for them.

For more information, visit [www.springfieldtpw.org](http://www.springfieldtpw.org) or call Chris Gilbert at 522-1410.

Kimberlee Flamm, Projects, Events & Communications Coordinator

## Your Celebration News

### Living in the Farms Anniversaries—February 2014

Alan & Judy Hill ~~~~~ 1969 ~~~~~ 45 years

Art & Patricia Tisone ~~~~~ 1978 ~~~~~ 36 years

Harry & Wanda Daugherty ~~~~~ 1980 ~~~~~ 34 years

Scott & Kim Gildea ~~~~~ 1999 ~~~~~ 15 years

Kurt & Cindy Goldick ~~~~~ 2002 ~~~~~ 12 years

Randy & Susan Scheib ~~~~~ 2006 ~~~~~ 8 years

Kevin & Erin Kernohan ~~~~~ 2008 ~~~~~ 6 years



### Happy Birthday to You, February Birthdays!

1st Gabe Ferguson	2nd Luke Ferguson Victoria Reese	3rd Gentry Bowles	4th Chris Post Bob Simons	5th Christine Paytner Mary Ellen Williams
6th Martha Goodwin	7th Chloe Gildea Wendy Rowland	9th Abby Purvis	10th Tom Agin Meghan Cooper Ciana Hogan	13th Dylan Tritt
15th Wayne Fields Joan Klefas	17th Chandler Schulz Richard Taylor	18th Judy Nelson	19th Christopher Carroll	20th Hunter Goldick
21st Rick Klefas Chloe Sadowskas Mark Stanfield	23rd Kevin Kernohan Jax McNett Josh Stanfield	27th Pat Barker Ellie McNett Caleb Stanfield	28th Judy Hill	

Did you know Pleasant Run Farms is on Facebook?

Join the Pleasant Run Farms Civic Association Group Today.

What a powerful tool to bond and share information in our community!



## PRFCA MEMBERSHIP REMINDER—2014

A reminder to all PRF civic association members, memberships run from January 1 through December 31 of each calendar year. Your Community and the Civic Association needs your membership dues! **Now is the time to submit your membership for 2014. Application is on back page of this memo or available at [www.pleasantrunfarms.org](http://www.pleasantrunfarms.org)** . Thank you for your continued support.

PRF Civic Association

## PLEASE JOIN THE PRF CIVIC ASSOCIATION

Here's why:

The membership pays for itself when you use member discounts at local merchants, i.e. 25% off regular menu price at Papa John's on Kemper Road, 10% off Skyline Chili on Kemper Meadows, to name a few.

Because our neighborhood has a working Civic Association, we have an effective voice with Springfield Township. Here are some of the items that were discussed at previous meetings:

- Potential uses for Welch Elementary if the Northwest District would close the school.
- Retail redevelopment on Hamilton Avenue.
- Ways to preserve our neighborhood pool.

Your membership fee helps pay for the insurance necessary to preserve and protect the Greenbelt. You will have voting rights at association meetings. Also, the publication of the neighborhood newsletter, "The Memo" is supported mostly by your membership fee.

The Civic Association members help ensure community events and opportunities continue, maintaining a high quality of life and protecting the value of our homes and neighborhood.

Some other things your Pleasant Run Farms Membership dues support:

- Scholarship Fund
- Landscape Contest
- Neighborhood Garage Sale
- 4th of July Parade

More information available on [www.pleasantrunfarms.org](http://www.pleasantrunfarms.org).

## Pleasant Run Farms Civic Association Mission Statement

Pleasant Run Farms Civic Association (PRFCA) exists to ensure a better quality of life for residents by offering a variety of volunteer opportunities for community involvement and commitment. The PRFCA does this by encouraging community awareness of Springfield Township resources, youth athletic programs, and a community swimming pool: and in offering a schedule of social activities giving membership/residents a way to "get to know each other."

PRFCA provides a variety of leadership opportunities for those who choose to get involved. Past leaders have contributed many benefits for community improvement such as liaison with Township on planning projects and maintenance of our commonly held Green space, communication with residents via the Memo or on the Website. PRF property values are enhanced by the existence of a Civic Association and would be further enhanced with increased membership. A strong Civic Association benefits the entire community and is what separates us from being "just another neighborhood."

PRFCA membership is currently open to any family or family member who would like to become involved in their community. Opportunity for involvement is never ending from serving on the Civic Association Board to coaching to helping out with several of the social activities offered.

Ensure PRF's future: GET INVOLVED



**2014 Pleasant Run Farms Civic Association, Inc. Membership Form**

Date: \_\_\_\_\_ Family last name: \_\_\_\_\_

Address: \_\_\_\_\_ Phone: \_\_\_\_\_

E-mail (please print clearly): \_\_\_\_\_

PRF Resident since: month \_\_\_\_\_ year \_\_\_\_\_ Check One: Membership Renewal \_\_\_\_\_ New Member: \_\_\_\_\_

*Please note your personal information including e-mail address is only used by the PRFCA to contact you regarding events and issues that pertain to our community. We respect your privacy and do not distribute, sell or trade any of your personal information.*

Household Member	Birth month/day	Adult/Child

The success of the Civic Association largely depends on volunteers in the community. Volunteers play an integral role in keeping programs in existence and running smoothly. Please check if you are willing to help with any of the following programs and the respective Board Member may contact you for assistance.

- 4th of July Parade \_\_\_\_\_ Scholarship Committee \_\_\_\_\_ Where needed \_\_\_\_\_
- Garage Sale \_\_\_\_\_ Membership \_\_\_\_\_
- Landscaping Contest \_\_\_\_\_ Communications \_\_\_\_\_
- Swim Club \_\_\_\_\_ Sports \_\_\_\_\_ (specify which sport \_\_\_\_\_)

We publish members anniversary (years living in PRF) and birthdays in the Memo.

I **do not** want household anniversary and birthdays published in the Memo.

The Memo is electronically distributed monthly to members of the civic association only. The memo will be distributed to the entire PRF community during the months of January, April and September in hard copy form. If you are a member and require a hard copy of the memo monthly please indicate below:

I need a hard copy of the memo.

If you have a child and he/she participates in sports, you must be a member. Annual 2014 Membership fee: \$25.00. Please return this completed form with your check. Please make your check payable to PRFCA and mail or drop off to: Ed McNett, 1403 Forester Drive, Cincinnati, Ohio 45240.

Please check out the PRFCA website at [pleasantrunfarms.org](http://pleasantrunfarms.org). We are also on Facebook under Pleasant Run Farms Civic Association. Please give your comments and upload any pictures which involves the Farms. Please become a fan or join the group! Thank you for your support!

Membership Use Only: Date Received: _____ Check # _____ Amount: _____ Date Cleared: _____ Membership card: _____
---