

*The Pleasant Run Farms MEMO*  
*"An Active Community"*  
*December 2013*  
*Volume 45 Issue 12e*  
*[www.pleasantrunfarms.org](http://www.pleasantrunfarms.org)*  
*A publication brought to*  
*you by the PRF Civic Association*



### **General Meeting of Pleasant Run Farms Civic Association**

A General Meeting of the Pleasant Run Farms Civic Association will be held on Thursday, January 23rd at 7:30 pm in the Welch Elementary library. The meeting is open to all PRF residents. Please plan to attend and let your voice be heard on any concern or issue you may have. We hope to see you on January 23rd.



Christina Norris, PRFCA Secretary



### **Pleasant Run Farms Civic Association Scholarship**

The Pleasant Run Farms Civic Association will once again offer a \$500 scholarship to a graduating high school senior. Applicants must be receiving a high school diploma and intend to continue his or her education at a college or technical school. The applicant's family must be a residents of Pleasant Run Farms and a current member of the Civic Association to be eligible. Scholarship applications will be available online at [www.pleasantrunfarms.org](http://www.pleasantrunfarms.org) in February, or you may contact our secretary, Christina Norris, to obtain a hard copy of the form. All applications must be returned to Christina Norris by March 31, 2014. The winner of the scholarship will be announced at the Civic Association's General Meeting in April.



If you are interested in serving on the scholarship committee to help judge the applications, please contact Christina Norris. Contact information on page 2 of this memo.

Christina Norris, PRFCA Secretary/Scholarship Chair



### **PRFCA Membership Reminder**

As a reminder, PRFCA membership runs January 1 through December 31 of each calendar year. Therefore if you are a current member and have not yet submitted your membership fee for 2014, your membership will expire December 31, 2013. This will affect your civic association's ability to continue some projects throughout the year, your receipt of this memo during electronic distribution months and the inclusion of your family's celebration information in the memo, for example.



Your civic association needs your membership fees by the end of each calendar year for the coming year. Now is a great time to submit your membership for 2014. Application is on the back page of the memo or available at [www.pleasantrunfarms.org](http://www.pleasantrunfarms.org).

We and your entire community appreciation your continued support.

PRFCA Board

NEW

YOU

CAN

USE



The MEMO is published by the Pleasant Run Farms  
Civic Association,  
11955 Elkwood Dr.,  
Cincinnati, Ohio 45240  
[www.pleasantrunfarms.org](http://www.pleasantrunfarms.org)



### **Hard Copy Issue Advertising Rates:**

*Back Full Page \$110    Regular Full Page \$90*

*Half Page \$65              Quarter Page \$45*

*Business Card Size Ad \$25*

*Classified Ad \$8*

*Electronic Issue Rates are 1/2 the cost of  
Hard Copy Issue Rates*

*Contact Venita Vivians at  
[vvivians@prodigy.net](mailto:vvivians@prodigy.net) to place your Classi-  
fied or Business Ad.*

## **Pleasant Run Dry Cleaners**

**Same Day Service-**

**In by 10:00    Out by 4:00**

**Shirt Laundry**

**FREE Minor Repairs**

**Ask for our 20% off Dry Cleaning  
Card**

**6106 Winton Road at Mack Road**

*(between Jay's Food Mart & Domino's Pizza)*

**Fairfield, OH**

**829-4441**

### **YOUR PRF EXECUTIVE BOARD MEMBERS:**

Kevin Puccini [kevinpuccini@yahoo.com](mailto:kevinpuccini@yahoo.com) (President)

OPEN (VP)

Ed McNett 377-4463 [emcnett@opwftg.com](mailto:emcnett@opwftg.com) (Treasurer)

Christina Norris 851-3013 [cdnorris2004@yahoo.com](mailto:cdnorris2004@yahoo.com)  
(Secretary)

OPEN (Membership)

Linda Boylson 674-1760 [laboilson@yahoo.com](mailto:laboilson@yahoo.com)  
(Community Activities)

Tonya Klei 742-0385 [tonya1@zoomtown.com](mailto:tonya1@zoomtown.com) (Swim Club)

OPEN (Athletics)

Venita Vivians [vvivians@prodigy.net](mailto:vvivians@prodigy.net) (Communications)

### **Memo Deadline for Advertisements and Articles Friday, December 27, 2013**

The **January Hard Copy Memo Delivery** will occur the week-end of January 4th. The memo will be available on the website, [www.pleasantrunfarms.org](http://www.pleasantrunfarms.org), by January 3, 2014. If you would like to **place an ad in** or **contribute an article to** the Memo, please contact Venita Vivians, Memo Editor at [vvivians@prodigy.net](mailto:vvivians@prodigy.net) (include Memo in the subject). If you have any problems with **receiving** your Memo, please contact Susan Scheib at 931-3508.

The Memo and the PRF Civic Association reserve the right to refuse any content. Letters to the editor will be published only with the authors name. Any comments, suggestions, or new contributors are welcome.

**PRFCA Membership Applications are available in this  
memo and on the website listed below or by calling  
our Membership Chairperson listed above.**

**Dues are \$25 a calendar year.**

**Check out the website below for additional news and  
community information.**

**[www.pleasantrunfarms.org](http://www.pleasantrunfarms.org)**

## PRFCA BOARD MEETING MINUTES

Pleasant Run Farms Civic Association  
Association Meeting  
November 21, 2013

A meeting of the Pleasant Run Farms Civic Association was held Thursday, November 21st, 2013 at 7:00 pm at the home of Tonya Klei. The following are the minutes from that meeting:

The meeting was called to order at 7:14pm.

President: Kevin Puccini—PRF resident Tiffany Stewart is in attendance at the meeting and is interested in the Membership Director position currently open. She has recently been in contact with the President to obtain more information about the position. The Board discussed specifics pertaining to the position with Tiffany and we thank her for her interest in assisting our community. Also, discussed recent concern raised by a resident about a privacy fence issue, and how to address.

Vice President: POSITION OPEN AT THIS TIME.

Treasurer: Ed McNett - Not present.

Secretary: Christina Norris discussed that the next PRFCA meeting will be a General Meeting to be held in the Welch Elementary library on January 23rd at 7:30 pm. There will be no December meeting as agreed upon by the Board.

Athletic Director: Chris Rowland sitting in to give report. He reported that Matt Heller will be serving as baseball director next year, and will be communicating with families soon. Note regarding soccer: All 4 teams that were eligible qualified for the state tournament this fall—congratulations to these athletes! Also, a new Athletics Director is needed—please contact the PRFCA President, Kevin Puccini, if interested.

Communications: Venita Vivians advised December's memo will be an electronic distribution. Ads and articles will be due by November 29th. The "Kids Looking for Work" information is currently being updated.

Membership Report: POSITION OPEN AT THIS TIME.

Community Activities: Linda Boylson—Not present.

Pool: Tonya Klei reported she has been meeting with the new pool committee for next year. They are planning to do a "direct mailer" soon to pursue membership. A payment plan for memberships will again be offered next year—5 installments due January through May. The payment plan can be accessed through the PRF website. Tonya noted that membership MUST increase in order to continue to sustain the pool. Those in the community are reminded that you do not need to be a PRF resident to join the pool, and to help spread the word about our wonderful and affordable swim club to family and friends.

Old Business: None

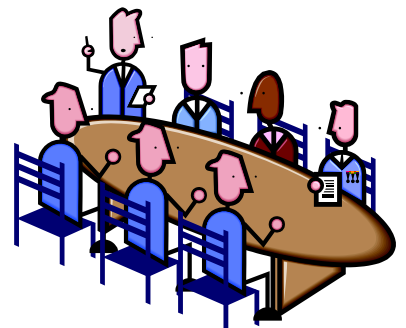
New Business: None

Announcements: None

Being no further business to come before the Board, the meeting was adjourned at 8:30 pm.

Next meeting: Thursday, January 23, 2014 at 7:30 pm: General Meeting at Welch Elementary library.

Christina Norris, PRFCA Secretary



## SPRINGFIELD TOWNSHIP ACTIVITIES

Art and Wine Wednesdays—6:30—9:00 pm All classes held at Springfield Township Senior & Community Arts Center, 9158 Winton Road, 45231 and are organized and operated by the Springfield Township Arts and Enrichment Council.

Whether you are an experienced artist or someone picking up a brush for the very first time, you will enjoy Art and Wine Wednesdays at the Springfield Township Senior & Community Arts Center. Sip white and red wines and let your creative side flourish. Our professional artist will guide the class with easy to follow directions for the featured paintings. At the end of the class, you will have a beautiful work of art to hang on your wall. View the monthly class projects online at <http://www.springfieldtwp.org/adultprograms.cfm>. Program fees include all supplies to make a 16"x20" canvas painting and includes one glass of wine. Additional glasses of wine are \$3. (5 min/15 max students) (coffee or soda may be substituted for wine)

Upcoming class dates and paintings to be created are as follows:

December 18



January 8



January 15



February 5

TBD

February 19



### Design Divas—NEW!

Moms and daughters will have an amazing time crafting together in Design Divas! In each two-hour class, moms and daughters will make their own coordinating project. Design Divas can be of any age although most classes are recommended for ages 7 and over due to the tools and skills required. Moms with adult daughters are welcome as well. Classes start at 6:30 p.m. and will be held the second Wednesday of each month. Please register at least one week prior to class. The cost is \$28 per person

Register by calling 522-1410 or sending an email to [artsinfo@springfieldtwp.org](mailto:artsinfo@springfieldtwp.org)

**Did you know Pleasant Run Farms is on Facebook?**

**Join the Pleasant Run Farms Civic Association Group Today.**

**What a powerful tool to bond and share information in our community!**

# AUGSBURG

## Lutheran Church

Jesus, God's Christmas gift of love, is here.  
Come celebrate!

Dec 24<sup>th</sup> - Family Candlelight Service, 4:30 pm  
Dec 24<sup>th</sup> - Traditional Candlelight Service, 11:00 pm

Augsburg Lutheran Church (ELCA)  
11676 Hamilton Ave. Phone 825-2240  
(South of Kemper, just north of Speedway)  
Visit our Facebook Page: "Augsburg Lutheran Church"

### Hamilton County Notary Public

Carol Taylor

For service call 513-258-5486

11920 Cedar Creek Drive

## Happy Holidays from the PRF Board



**HAPPY NEW YEAR**

### Kids Looking for Work!!!

Following is a list of young residents looking for work. The PRFCA/Memo does not endorse any of those listed; we list these names free of charge as a service to our community....

#### Babysitting:

Else Boylson, age 14, 259-9143, basic C.P.R., very good with kids including babies, schedule is EXTREMELY flexible

Sarah Dean, age 14, 674-9455, Red Cross babysitting course, CPR & First Aid trained/certified (spring 2011), babysitting and/or mother's helper

Maddie Girts, age 16, 648-9766, CPR certified, has own transportation for babysitting jobs

JaShaylia Jenkins, age 17, 723-1624, Certified babysitter (2011), CPR (2012). Also has dog care experience

Claudia Weitz, age 13, 825-3448, American Red Cross babysitting course

#### Yard Work/Pet Care/Odd Jobs:

Sarah Dean, age 14, 674-9455, pet care

Louis Girts, age 14, 648-9766, yard work, car washing & other odd jobs

Jay Sebastian, age 12, 502-0002, mow lawns, shovel snow, rake leaves, general cleaning

#### Tutoring:

Deja Martin—age 15, dmartfam@gmail.com, Northwest honor student

**Kids and parents please advise if this information needs updating.**



## Your Celebration News

### Living in the Farms Anniversaries—December 2013



Kim Kent ~~~~~ 1990 ~~~~~ 23 years

Mike & Cheryl Purvis ~~~~~ 1990 ~~~~~ 23 years

Ken & Kelly Girts ~~~~~ 1996 ~~~~~ 17 years

Jason & Charlotte Henry ~~~~~ 1998 ~~~~~ 15 years

Ed & Mandy McNett ~~~~~ 2002 ~~~~~ 11 years

### Anniversaries missing information on membership form

**John & Rosalind Poland ~~~~~ 1968 ~~~~~ 45 years**

**Ronald & Gretchen McDaniel ~~~~~ 1985 ~~~~~ 28 years**

Anna Cunningham ~~~~~ 1993 ~~~~~ 20 years

Fidel & Beth Akemon ~~~~~ 2000 ~~~~~ 13 years

Catherine “Cassie” Gamble & Kyrin Davis-Gamble ~~~~~ ??? ~~~~~ ? years

### Happy Birthday to You, December Birthdays!

1st Brenda Hogen	3rd Ric Boschert Deryck Cooper	5th Christina Boberg Kathleen Boberg	6th Carol Anderson Norm Obert
12th Vickie Buck	13th Lucas Sadouskas Dennis “DJ” Schoen	15th Elizabeth Jergens Amari Whittaker	18th Deborah Connelly Isaac Fears
19th Mandy McNett Erica Rawlings	21st Melinda Carroll Luke Strebe	23rd Jim Gutknecht Jim Hughes Gretchen McDaniel	26th Elese Boylson Michael Jansen Margaret Neumann Koltein Osburn
27th Karlie Jackson	29th Marisa Fears Jonathan Paytner	30th Kayla Rawlings	31st Zelma Jean Crosby Ruthann Finnen

## PRFCA MEMBERSHIP REMINDER—2014

A reminder to all PRF civic association members, memberships run from January 1 through December 31 of each calendar year. Your Community and the Civic Association needs your membership dues at the end of each calendar year for the coming year and you receive the maximum benefit from your membership! **It is a great time to submit your membership for 2014. Application is on the back page of this memo or available at [www.pleasantrunfarms.org](http://www.pleasantrunfarms.org).** Thank you for your continued support.

PRF Civic Association

## PLEASE JOIN THE PRF CIVIC ASSOCIATION

Here's why:

The membership pays for itself when you use member discounts at local merchants, i.e. 25% off regular menu price at Papa John's on Kemper Road, 10% off Skyline Chili on Kemper Meadows, to name a few.

Because our neighborhood has a working Civic Association, we have an effective voice with Springfield Township. Here are some of the items that were discussed at previous meetings:

- Potential uses for Welch Elementary if the Northwest District would close the school.
- Retail redevelopment on Hamilton Avenue.
- Ways to preserve our neighborhood pool.

Your membership fee helps pay for the insurance necessary to preserve and protect the Greenbelt. You will have voting rights at association meetings. Also, the publication of the neighborhood newsletter, "The Memo" is supported mostly by your membership fee.

The Civic Association members help ensure community events and opportunities continue, maintaining a high quality of life and protecting the value of our homes and neighborhood.

Some other things your Pleasant Run Farms Membership dues support:

- Scholarship Fund
- Landscape Contest
- Neighborhood Garage Sale
- 4th of July Parade

More information available on [www.pleasantrunfarms.org](http://www.pleasantrunfarms.org).

## Pleasant Run Farms Civic Association Mission Statement

Pleasant Run Farms Civic Association (PRFCA) exists to ensure a better quality of life for residents by offering a variety of volunteer opportunities for community involvement and commitment. The PRFCA does this by encouraging community awareness of Springfield Township resources, youth athletic programs, and a community swimming pool: and in offering a schedule of social activities giving membership/residents a way to "get to know each other."

PRFCA provides a variety of leadership opportunities for those who choose to get involved. Past leaders have contributed many benefits for community improvement such as liaison with Township on planning projects and maintenance of our commonly held Green space, communication with residents via the Memo or on the Website. PRF property values are enhanced by the existence of a Civic Association and would be further enhanced with increased membership. A strong Civic Association benefits the entire community and is what separates us from being "just another neighborhood."

PRFCA membership is currently open to any family or family member who would like to become involved in their community. Opportunity for involvement is never ending from serving on the Civic Association Board to coaching to helping out with several of the social activities offered.

Ensure PRF's future: GET INVOLVED



## 2014 Pleasant Run Farms Civic Association, Inc. Membership Form

Date: \_\_\_\_\_ Family last name: \_\_\_\_\_

Address: \_\_\_\_\_ Phone: \_\_\_\_\_

E-mail (please print clearly): \_\_\_\_\_

PRF Resident since: month \_\_\_\_\_ year \_\_\_\_\_ Check One: Membership Renewal \_\_\_\_\_ New Member: \_\_\_\_\_

*Please note your personal information including e-mail address is only used by the PRFCA to contact you regarding events and issues that pertain to our community. We respect your privacy and do not distribute, sell or trade any of your personal information.*

Household Member	Birth month/day	Adult/Child

The success of the Civic Association largely depends on volunteers in the community. Volunteers play an integral role in keeping programs in existence and running smoothly. Please check if you are willing to help with any of the following programs and the respective Board Member may contact you for assistance.

4th of July Parade \_\_\_\_\_ Scholarship Committee \_\_\_\_\_ Where needed \_\_\_\_\_  
 Garage Sale \_\_\_\_\_ Membership \_\_\_\_\_  
 Landscaping Contest \_\_\_\_\_ Communications \_\_\_\_\_  
 Swim Club \_\_\_\_\_ Sports \_\_\_\_\_ (specify which sport \_\_\_\_\_)

We publish members anniversary (years living in PRF) and birthdays in the Memo.

☐ I **do not** want household anniversary and birthdays published in the Memo.

The Memo is electronically distributed monthly to members of the civic association only. The memo will be distributed to the entire PRF community during the months of January, April and September in hard copy form. If you are a member and require a hard copy of the memo monthly please indicate below:

☐ I need a hard copy of the memo.

If you have a child and he/she participates in sports, you must be a member. Annual 2014 Membership fee: \$25.00. Please return this completed form with your check. Please make your check payable to PRFCA and mail or drop off to: Ed McNett, 1403 Forester Drive, Cincinnati, Ohio 45240.

Please check out the PRFCA website at [pleasantrunfarms.org](http://pleasantrunfarms.org). We are also on Facebook under Pleasant Run Farms Civic Association. Please give your comments and upload any pictures which involves the Farms. Please become a fan or join the group! Thank you for your support!

Membership Use Only:

Date Received: \_\_\_\_\_ Check # \_\_\_\_\_ Amount: \_\_\_\_\_ Date Cleared: \_\_\_\_\_ Membership card: \_\_\_\_\_